



AIR DO USER MANUAL v1

STAND ALONE PNEUMATIC ENGRAVING MACHINE
(no external air pump needed)



Air Do X
(with Micromotor)



Air Do S
(without Micromotor)

USER'S MANUAL

SmartPro Air Do V1

CONTENTS		Page No.
I.	DISCLAIMER, EXCLUSIONS AND LIMITATIONS	1
II.	DESCRIPTIO	2
III.	N FEATURES	3
IV.	SPECIFICATIONS	3-4
V.	QUICK GUIDE	5-7
VI.	TESTER OVERVIEW	8
VII.	TOOLS AND ACCESSORIES	9
VIII.	ASSEMBLY AND PARTS REPLACEMENT	10
IX.	SERVICE AND REPAIR	10

VII. TOOLS AND ACCESSORIES



Micro Motor Handpiece with Stand



Engraver Handpiece with Flexible Air Tube



Power Supply Adaptor with Cable



Foot Pedal

Engraver Blades and Collets



6 different blades (2.5 mm)



6 Engraver Handpiece Collets (2.5 mm inner dia x 3 pcs. 3.5 mm)

Other Accessories

- User Manual
- International Warranty
- Warranty Certificate
- Hex Tool (1 pc)
- Hex Socket Screw for Collet (2pcs)
- Engraver Handpiece Spring (1 pc)
- Rubber Seal Rings for Collet (2 pcs)
- Rubber Seal Rings for Engraver Handpiece (2 pcs)
- Engraver Handpiece Pistons (2 pcs, 1 pc initially installed)

II. DESCRIPTION

SmartPro® Air Do is a Professional Pneumatic Jewelry Engraver and Setting with Micromotor, two-in-one system. A new generation innovative pneumatic system with a built-in air compressor and Micromotor that fit in a small space on your work bench and gives versatility and control when engraving, setting, or even, drilling, polishing, buffing and many more.

SmartPro develops tools for jewelry makers and specializes in the manufacture of Gemological precise instruments. The SmartPro Air DO X offers an advanced air system that does not need any external air compressor which uses small space and makes no loud noise in your workplace. Precision digital control regulators and seamless hand and foot control, enables high-end performance, precision, and optimal working comfort for a wider range of creative applications.

The single engraver handpiece can be used different kinds of blades (3.5mm dia & 2.5mm dia) to allow for a wide variety of engraving styles, from light bulino work to heavy engraving in hard metals like steel and titanium.

This system offers you a revolutionary, powerful pneumatic graver. Forget about the big & loud expensive compressor. Save space and time and work more efficiently with this one-of-a-kind, new technology. It includes 6 quick change collet with color coding, a

111. FEATURES

- ◆ Precise pneumatic system with Micromotor hand and foot control
- ◆ Ideal for Setting Engraving
- ◆ Drilling
- ◆ Polishing
- ◆ Buffing
- ◆ Lapping
- ◆ No external Air Compressor Needed
- ◆ Overload protection
- ◆ Digital LED display
- ◆ LED Indicator for Tool Selection and Speed Control

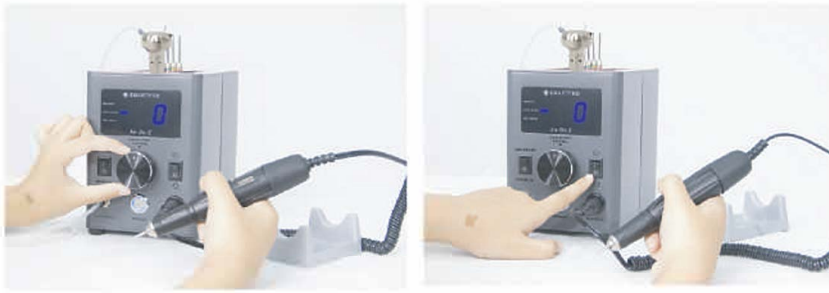
IV. SPECIFICATIONS

Model	Air Do X	Air Do S
Brand	Smart Pro	Smart Pro
Body color	Gray	Black
Power Input	100-240 VAC,4.2A,50/60 Hz	100-240 VAC,4.2A,50/60 Hz
Graver Speed	0-60%	0-60%
Micromotor Speed	0-35000 RPM	-
Dimension	(L) 240 x (W) 130 x (H) 185 (MM)	(L) 240 x (W) 130 x (H) 185 (MM)
Weight	5 kg	5 kg
Packaging Box	30(W)x152.4(L)x210(H) (MM)	30(W)x152.4(L)x210(H) (MM)
Gross Weight	8.5 kg	8.3 kg
Country of Origin	Thailand	Thailand

VI. TESTER OVERVIEW



Micro Motor Direction Switching (Model-X)



Directions can be changed by switching the rocker on right.

Note: Set the speed setting at zero before changing the direction.

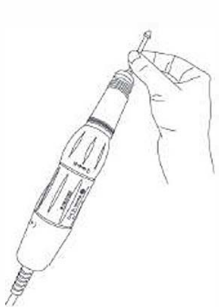
Changing Drill Bit of Micro Motor



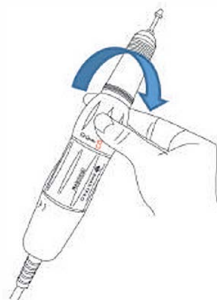
1. Rotate in R direction
(for remove drill bit)



2. Remove drill bit out of micro motor



3. Insert drill bit
to micro motor



4. Rotate in S
direction (for lock drill
bit)

The hand piece comes with two pistons. depending on the type of your work. The piston can be easily replaced by unscrewing the handle and removing the spring. It includes 6 quick-change collet with color coding, a set of gravers & a holder for the handpiece.

The control knob regulates the stroke power of the engraving handpiece and micromotor. It is also responsible for the frequency of strokes and micromotor speed control.

By pressing the foot pedal, the handpiece will start accelerating from 0% up to your chosen position speed. Increasing the speed doesn't mean you'll get more power. Finding the right speed for the chosen position for your particular kind of work by using speed Control Micromotor has 0-35000 RPM speed it can be used for drilling, polishing, buffing, and I apping.

V. QUICK GUIDE



STEP 1
Connect Foot pedal at the



STEP 2
Connect Power Supply at the back-left side.



STEP 3
Connect the Engraver Handpiece at the front-left side.



STEP 4
Connect the micro motor at the front right side.



STEP 5
Turn the Power



STEP 6
Tool Switching (Model-X):
Select which tool to use by switching the rocker switch on left.

Control Switching (Hand/Foot):



Model-X: Switch the knob by rotating 1t clockwise around 45 degrees then rotate it back to the arrow position.

Light indicator for the Foot Control will be turned ON/OFF



Model-S: Switch the rocker switch on right



STEP 7
Adjust the control knob clockwise and counterclockwise for the desired speed level.

I. DISCLAIMER, EXCLUSIONS, AND LIMITATIONS OF LIABILITY

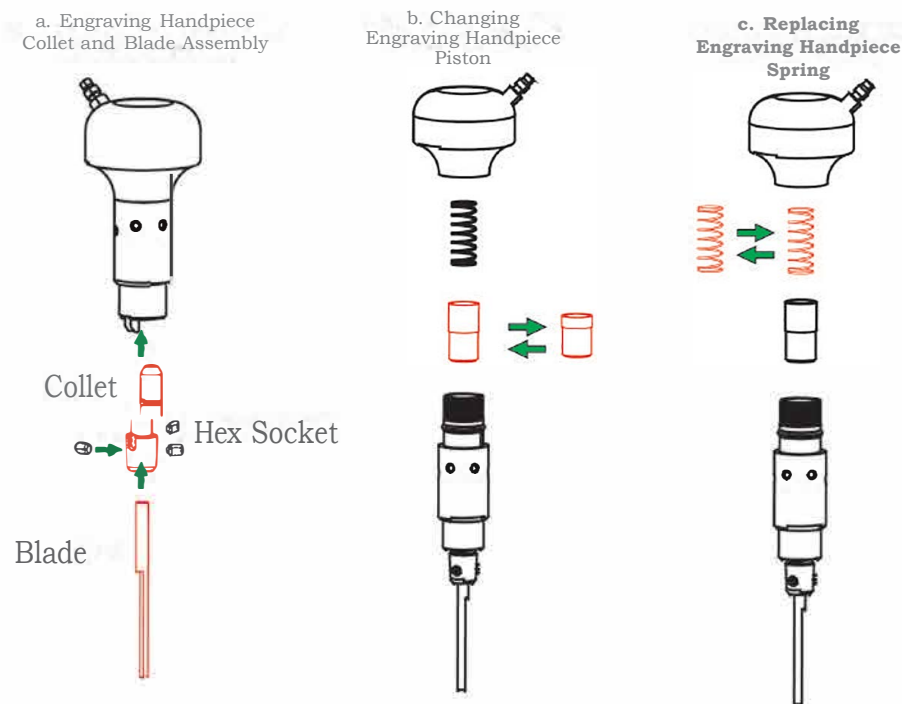
Please read and note SmartPro WARRANTY TERMS AND CONDITIONS as stated in the warranty card. SmartPro warranty for its subject to proper use by its user in accordance with all the terms and conditions as stated in the relevant user manual and shall cover only manufacturing defects.

Due to continued product improvement, SmartPro reserves the right to revise all documents including the right to make changes to the user manual without notice and without obligation to notify any person of such revisions or changes.

SmartPro shall not be responsible for any damage or loss resulting from the use of the product or user manual, and under no circumstances shall SmartPro, its manufacturer or any of its subsidiaries, licensors, distributors, resellers, servants and/or agents be liable for any direct or indirect damages resulting from the use of this product. To the maximum extent permitted by applicable law, under no circumstances shall SmartPro, its manufacturer or any of its subsidiaries, licensors, distributors, resellers, servants and/or agents be liable for any special, incidental, consequential or indirect damages howsoever caused.

Smartpro Air do referred to in this user manual is provided and/or sold as is basis. Except as required by applicable law, no warranties of any kind, expressed or implied, including, but not limited to, the implied

VIII. ASSEMBLY AND PARTS REPLACEMENT



WARNING: Please note the below instructions before use:

- ◆ Do not operate with other power supply adapter. different power supply may damage your machine. Requires 72 V 18 A
- ◆ In changing the Micro Motor Directions, recommended to set the speed at 0 before switching. This is to prevent high current surge on

