



aczel®

... Since 1986

Desktop Laser Marker Cutting-edge Marking Technologies



Solution Simplified

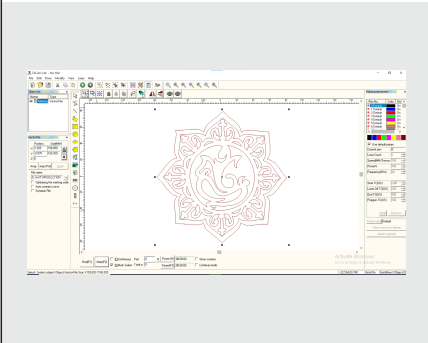
www.aczel.com

Laser Marking and Engraving on Jewelry and Precious Metals

Aczet Laser marking machines is designed to perform high quality cuts and engravings for adding Marks, logos, text, or graphics on metal plates in the shortest possible time.

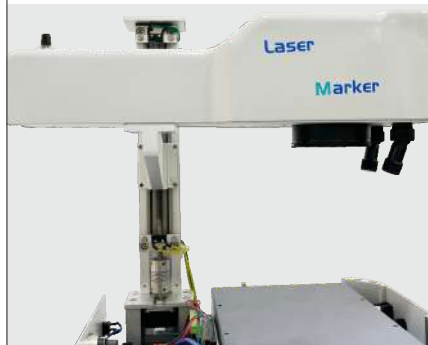
It offers different power configurations which, in addition to the normal applications for marking and engraving, allow the cutting of foils over 1.2mm thick (100W models). The key features of aczet laser marking machines contribute to their precision, flexibility, and efficiency - significantly lowering production times.

Simple and Diverse Software



- The machine using and the software are very simple and intuitive for any users
- It allows to engrave logos, text, images, vector files, photographs on any metal (gold, silver, steel etc)
- It allow importing files of most well-known computer-design programs currently in existence (svg, dxf, bmp, plt, jpg, dwg, etc.).

Motorized Z axis



- Motorized Z axis for focusing the focal lens make it operation much easier for user.

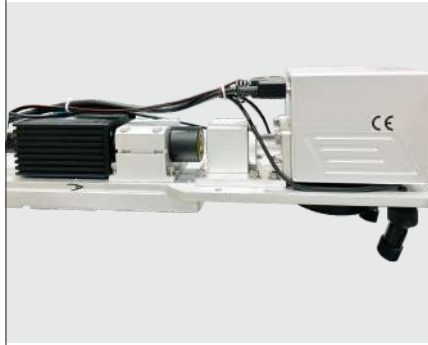


Precision and Accuracy



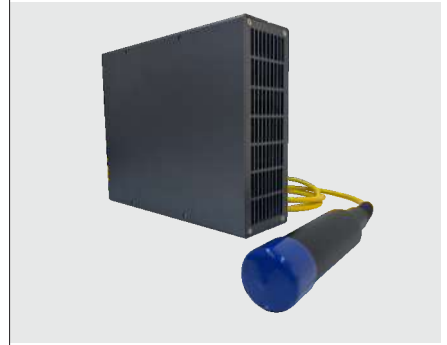
- It offer high precision and accuracy. With a maximum marking area of 160x160 mm and resolutions up to 16 µm, this is particularly important in applications where fine details or small characters are required.

Quality of components



- Thanks to its particular design and the quality of the components used, it is possible to obtain excellent markings and engravings of very elaborate and complex design from the graphic point of view.

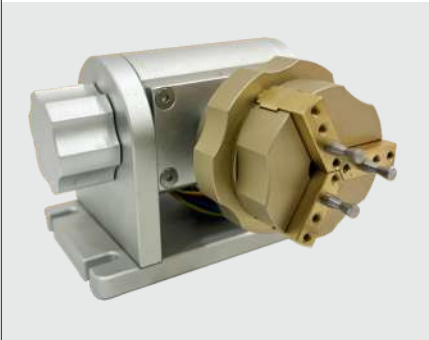
Air cooled – Pulse Fibre Laser



- Machine uses the "PULSE FIBER LASER SOURCE" have no moving parts or mirrors, have no maintenance costs, are electrically efficient, work effectively for heights working hours, and has excellent beam quality which guarantees very high production performance and the possibility of being able to cope with intensive workloads.
- Air cooler - no need for external chiller – de ionized water.

Optional Accessories :

Standard Rotary



- Rotary motor for marking and cutting rings, bracelets and curved surfaces; for Inner & Outer Marking

Professional Rotary



- Rotary motor for marking and cutting rings, bracelets and curved surfaces; for Inner & Outer Marking

Cutting Zig



- Automatic plate feeder for serial marking and cutting;

Eye Protection Cover



- Eyes Protection
- Dust Proof
- Noise Reduction

Dust Collector



- Extraction system for dust recovery and smoke filtering;





Dimensions (L x W x H)
600 x 450 x 380 mm
Weight 18 kg

Model	LM 20
Laser Source	Pulsed Fiber Laser
Laser Power	20W
Wave Length	1064 nm
Beam Quality M ²	Excellent, M <1.6
Laser Frequency	20 Hz - 100KHz
Focal Marking Area	60 x 60 / 110 x 110 mm
Focal Marking Spot	16 μm / 26 μm
Working Life of Laser	Greater than 50,000 hours
Marking Speed	5000 mm/s
Max Pulse Energy	upto 1 mJ
Axis	Motorized Z Axis
Cooling System	Air Cooling
Pulse Duration	100 ns at 20kHz
Power Consumption	300 W
Power Supply	220V AC / 50Hz Single Phase (110V on request)
Packing Dimension (Lx W x H)	600 x 450 x 520 mm
Laser Class	Class I (Closed), Class 3R (Open)



Dimensions (L x W x H)
680 x 460 x 632 mm
Weight 45 - 50 kg

Model	CFM 20	CFM 30	CFM 50	CFM 100
Laser Source	Pulsed Fiber Laser			
Laser Power	20W	30W	50W	100W
Wave Length	1064 nm			
Beam Quality M²	<1.6			
Pulse Repetition Rate	20 Hz - 100KHz			
Focal Marking Area	60 x 60 / 110 x 110 mm			
Focal Marking Spot	16 μm / 26 μm			
Working Life of Laser	Greater than 50,000 hours			
Marking Speed	7000 mm/s			
Max Pulse Energy	upto 1 mJ			
Axis	Auto Z Axis			
Cooling System	Air Cooling			
Pulse Duration	100 ns at 20kHz			
Power Consumption	300 W			500 W
Power Supply	220V AC / 50Hz Single Phase (110V on request)			
Packing Dimension (Lx W x H)	580 x 460 x 640	680 x 460 x 640 mm		
Laser Class	Class I (Closed), Class 3R (Open)			

Common Application Data

✓✓ Excellent ✓ Good ✗ Not Suitable

Model	Metal Engraving	Photoen Graving	White Gold, Num Engraving	Rings And Bangles	Cut <0.5 mm	Cut <1.0 mm	Cut <1.5 mm	Serial Cutting
LM 20	✓	✓	✓	✓	✗	✗	✗	✗
CFM 20	✓✓	✓✓	✓✓	✓✓	✓✓	✓	✗	✗
CFM 30	✓✓	✓✓	✓✓	✓✓	✓✓	✓	✗	✗
CFM 50	✓✓	✓✓	✓✓	✓✓	✓✓	✓✓	✓✓	✓
CFM 100	✓✓	✓✓	✓	✓✓	✓	✓✓	✓✓	✓✓

INDIA
Aczet Pvt. Ltd.
E-2, Plot No. 11, WICEL,
Opp. Seepz Gate No. 1,
Andheri (E), Mumbai 400093.
Email : export@aczet.com
sales@aczet.com
Phone : + 9122 4243 7700

USA
Aczet INC.
1637 Stelton Road Unit B-5,
Piscataway, NJ 08854
Email : tejas@aczet.com
Toll Free : 1800 997 1440

UAE
Aczet Instruments LLC
P.O.Box 27137, Old Goldsouq,
Deira - Dubai.
Email : danny.s@aczet.com
Phone : +971 50 6593253

THAILAND
Aczet Thailand Co. Ltd.
1A1, Gr. Floor, BIS Building,
119 Mahesak Road, Suryawong,
Bangrak, Bangkok - 10500
Email : utkarsh.p@aczet.com
Phone : +66 920456757



For more information

▶ www.aczet.com

All Specifications & Dimensions are subject to change without Prior Notice.